



FOCUS

Language School

Igniting your potential

CRICOS Provider 03346E

" THOSE WHO KNOW
NOTHING OF FOREIGN
LANGUAGES, KNOW
NOTHING OF THEIR OWN."

- Johann Wolfgang von Goethe



FOCUS

Language School

We are a dynamic, innovative, and visionary institution specialising in language training. We are committed to providing academic excellence, supportive student services and exceptional learning experiences. Our quality courses are developed in-house with extensive teaching and industry experience, so we can meet the different learning needs of each and every student.

We focus on the practicality and versatility of language learning, ensuring what you learn will actually be helpful to your specific goals, including:

- Improving your English skills to travel or live in Australia
- Finding your pathways to Australian secondary schools, vocational education and training (VET) institutions, and further or higher education
- Refining your English to communicate confidently in specific settings, such as business, hospitality, science, career development etc.

Focus Language School is a registered CRICOS provider (No. 03346E).

Visit us at [FOCUS.EDU.AU](https://www.focus.edu.au).

OUR PROGRAMS

English Language Intensive Courses for Overseas Students (ELICOS)

HIGH SCHOOL PREPARATION [CRICOS Code: 112366E] LEVEL 1 – LEVEL 7

The High School Preparation (HSP) program is designed for students aged between 13 to 17, from non-English speaking countries. It provides a number of entry and exit points throughout the semester to accommodate every student and their different learning needs. It is suitable for all those planning to enter Australian secondary schools anywhere between Year 7 to 11, regardless of their English proficiency.

The program includes an English curriculum that is government recognized and especially tailored for junior and senior high school students, as well as carefully selected educational content from ESL topics based on Australia's year 5 to 11 curriculum of mathematics, sciences, and creative arts. Subjects to develop a cultural understanding of school life in Australia,, as well as supplementary textbooks and other study materials used in Australian schools will be included in the lessons to ensure a fully integrated and comprehensive learning experience for our students. Students will graduate confident in their language abilities, familiar with the Australian school culture, and well-prepared to commence Australia's best schools.

Intakes: Every five weeks

Course Length: 10 weeks per level

Course Structure: 25 hours per week, Monday to Friday, with up to 5 hours for homework

Age: Between 13 to 17 years old

Entry Requirements: Students must have completed elementary school

RECOMMENDED SCHOOL ENTRY LEVEL

AEAS	IELTS	HSP Level	Recommended school entry level
80+	6.5	Level 7	Year 11
≤ 79	6.0	Level 6	Year 9 and 10
≤ 70	5.5	Level 5	Year 7 and 8
≤ 60	5.0	Level 4	Not recommended for school entry
≤ 45	4.5	Level 3	
≤ 35	4.0	Level 2	
≤ 25	3.5	Level 1	

GENERAL ENGLISH [CRICOS Code: 078160F] ELEMENTARY TO ADVANCED

At Focus Language School, the General English program is offered at Elementary, Pre-intermediate, Intermediate, Upper-intermediate and Advanced levels, and can serve as the perfect stepping-stone towards the study of English for Academic Purposes, IELTS, PTE or OET preparation courses. It is comprised of up to five 10-week sequential English language programs. Each week of the program delivery is further divided into 4 hours of curriculum content per day, giving a total of 20 hours per week of structured delivery. In addition, each week, the program offers one extra optional hour per day over four days, according to demand.

Intakes: Every Second Monday

Course Length: Up to 52 weeks

Course Structure: 20 Hours per week, Monday to Friday

Class timetables will be provided at Orientation Program

Age: 18 and above

Assessment: Types of assessment include tests, homework and teacher observations regarding participation

Entry Requirements: There are no minimum academic requirements for this program

ENGLISH FOR ACADEMIC PURPOSES (EAP) LEVEL 1 [CRICOS Code: 078161E]

The focus of the EAP course is to develop English language proficiency for academic use, which students will require in order to study alongside native speakers in further and higher education.

EAP 1 bridges the gap between General English and Academic English, and is foundational for those wanting to advance their English to an academic level. It teaches students how to develop the necessary skills required to be effective in further education settings, such as note-taking, essay writing and presentation skills. It also provides strategies for undertaking research and handling unfamiliar academic vocabulary.

Intakes: Every Second Monday

Course Length: 10 weeks

Age: 18 and above

Course Structure: 20 Hours per week Monday to Friday

Class timetables will be provided at Orientation Program

Assessment: Types of assessment include essay writing, oral presentation, research report writing and grammar tests.

Entry Requirements:

- Successful completion of intermediate level or above of the General English course, or
- Achieve a satisfactory result in an ELICOS placement test, or
- Demonstrate English level by providing evidence from an internationally recognized English language test (for example, IELTS Band 5.0 with no band <4.5).

EAP LEVEL 2 [CRICOS CODE: 078162D]

The focus of the EAP course is to develop English language proficiency for academic use, which students will require in order to study alongside native speakers in further and higher education.

EAP 2 focuses on developing students' academic English skills to prepare them for vocational-level studies and tertiary studies. Students are given further practice in academic skills, such as how to analyse the characteristics of written and spoken academic texts, how to develop an awareness of the academic culture, and how to avoid plagiarism. This course also guides students in developing proficiency in sophisticated essay organisation, note-taking, group discussions, reference writing and text paraphrasing. Students learn more effective research skills and develop academic presentation abilities.

Intakes: Every Second Monday

Course Length: 10 weeks

Age: 18 and above

Course Structure: 20 Hours per week Monday to Friday

Class timetables will be provided at Orientation Program

Assessment: Types of assessment include essay writing, oral presentation, research report writing and grammar tests.

Entry Requirements:

- Successful completion of Upper Intermediate level or above of the General English course or EAP Level 1, or
- Achieve a satisfactory result in an ELICOS placement test, or
- Demonstrate English level by providing evidence from an internationally recognized English language test (for example, IELTS Band 5.5 with no band < 5.0).



Other Programs

ENGLISH@WORK

English@Work is a non-accredited program designed by Focus Language School to empower university graduates and young professionals who come from non-English backgrounds to confidently and successfully communicate in a business environment. To overcome the barriers of geography and time, this course is designed for online delivery to maximise the flexibility of your learning activities. Students will have the luxury to learn at their own preferred time and place at their own pace, but are still supported by interactive virtual tutorials.

BESPOKE PROGRAMS

We understand that there is no “one-size-fits-all” solution when it comes to language learning. To be able to master a language, one needs to understand the context and the environment in order to adapt their language style, choice of words, and even the underlying structure of communication.

Our bespoke language training programs can provide tailored and targeted solutions to various language learning needs of our corporate and institutional clients. We develop specific course contents and materials to suit your learning objectives, and we endeavour to offer flexible delivery of the program.

FOCUS CONVERSATION LABS

Focus Conversation Lab welcomes all international students living in Melbourne to join us for weekly sessions to practice English, make friends and build a community of learners.



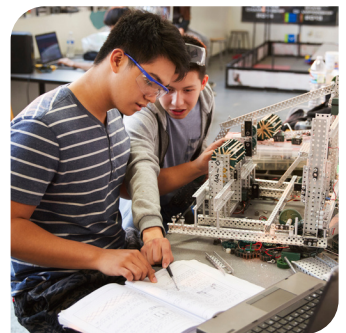
SUMMER SCHOOL

Study Tours and Summer School Programs

Focus provides **study tours** and **summer school** programs for overseas students over the age of 10. Our course content is rich in choice, flexible in arrangement, and filled with experiences unique to Australia. We can also tailor the learning experience according to the size and needs of the study groups.

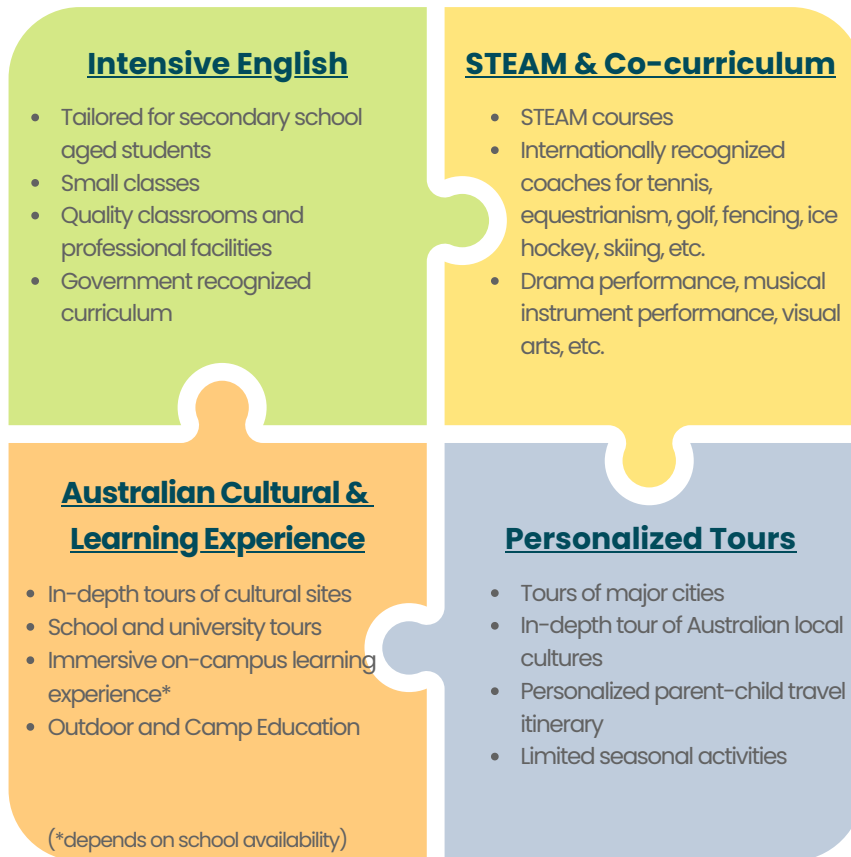
Our school is located in Melbourne, Victoria's capital, well-known for being the "Education Capital of Australia". Aside from providing an English curriculum that is government recognized and especially tailored for junior and senior high school students, our programs also include topics such as STEAM (science, technology, engineering, arts, and mathematics), camping and outdoor education, specialized sports training, art courses, Australian cultural experiences, tours of local middle school and universities, and immersive study experiences in local schools.

Families participating in special parent-child groups can also choose to include personalized travel itineraries to visit major cities and scenic spots throughout Australia.



Program Content

The following components of our Summer School program can be combined in different ways according to student and family needs.



Class size: 8 to 15 students

Student age: 10-14 years old for parent-child groups, 14-17 years old for student only groups

Accommodation options: Designated student accommodations or homestay.*

Course length: Depending on the group size and needs, our summer school and study tour can vary from 2 weeks to 6 weeks. The content of the program is flexible and can be arranged accordingly.

Program content combination examples:

2 WEEK SCHOOL TOUR

- 1 week of intensive English
- 1 week of local cultural experience and/or local in-school study experience

2 WEEK SUMMER SCHOOL

- 1 week of intensive English
- 1 week of STEAM / sports / outdoor education / seasonal activity.

4 WEEK SUMMER SCHOOL

- 2 weeks of intensive English
- 1 week of local cultural experience and/or local in-school study experience
- 1 week of STEAM, sports, outdoor education, or seasonal activity

4 WEEK INTENSIVE ENGLISH

- 4 weeks of intensive English
- STEAM, sports, outdoor education, or seasonal activity included

6 WEEK SUMMER SCHOOL

- 4 weeks of intensive English
- 1 week of local cultural experience and/or local in-school study experience
- 1 week of STEAM, sports, outdoor education, seasonal activity, or personalized tour of Australia

*Depends on the availability of host families

STUDY IN AUSTRALIA

We can provide you with professional and comprehensive guidance, and assist you in completing all the following steps, so that you can begin your educational journey with confidence.

CONSULTATION

- Learn more about studying abroad
- Explore study opportunities and academic programs Australia has to offer

01

PREPARATION

- Finalize your decision to study abroad
- Shortlist desired schools, universities, and/or programs
- Take the required standardized English tests

03

02

STUDY TOUR / SUMMER SCHOOL

- Immerse in Australian culture and education as a holiday experience
- Explore what it's like to study abroad prior to making the decision
- Improve English with intensive English classes
- Visits schools and universities
- Enjoy cocurricular and extracurricular activities

SCHOOL APPLICATION

- Gather all documents required for school application
- Know the intake times and the academic requirements
- Prepare for possible face-to-face interview
- Start preparations early!

04

ARRIVING IN AUSTRALIA

- Get to know your living situation and your campus
- Get to know your teachers and your guardians

08

09

LANGUAGE SCHOOL

- Language school may be mandatory prior to the beginning of your main study
- Get used to Australia's educational culture
- Start making friends

ENROLMENT CONFIRMATION

- Receive a letter of offer
- Accept the offer
- Pay the tuition fees and reserve your place

05

07

PREPARE TO TRAVEL

- Arrange for proper insurance, accommodation, and welfare if need be.

06

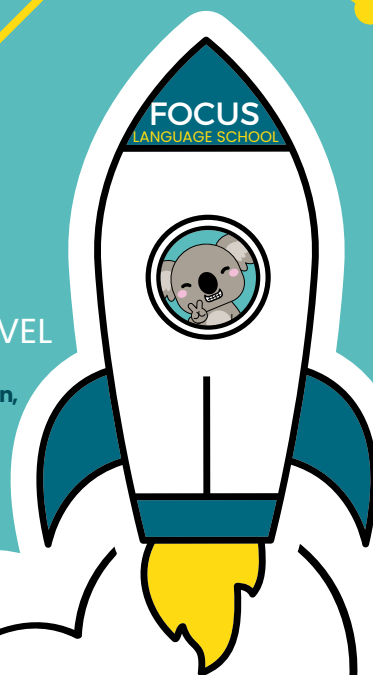
VISA APPLICATION

- Obtain all necessary and correct documents
- Visa processing time varies
- Begin preparations early so you may attend school on your desired starting term

10

MAIN COURSE

After completing your language studies and meeting the language requirements of your school or university, you can officially start your studies of your main course!



STUDENT SERVICES

To better support you throughout your journey at Focus Language School, we offer a variety of student support services you can take advantage of in order to make the most out of your experience. We have dedicated student support staff on-site, chosen for their knowledge of and experience with supporting students on a daily basis. These services are designed to make your studies with us as seamless and as rewarding as possible.

Our student support services include:

- Language support
- Academic support
- Social programs
- Special needs support
- Counselling services
- Accommodations support
- Job placement services
- And many other services upon request



STUDENT ACTIVITIES

Special activities are planned throughout each learning period for our students, including academic support, information sessions, social events, and excursions. These activities are not only great for increasing student engagement and social life, but they also allow students to spend time with their peers and our staff members, to build positive relationships.

STUDENT ACTIVITIES CALENDAR - SAMPLE

	MON	TUE	WED	THU	FRI
WEEK 1					Welcome Tea
WEEK 2					
WEEK 3	Job Club				
WEEK 4				Excursion	
WEEK 5		Teacher Office Hour			
WEEK 6					
WEEK 7			Movies		
WEEK 8					
WEEK 9			Excursion		
WEEK 10		Teacher Office Hour			End of Term Lunch

LIVING IN MELBOURNE

Melbourne is the coastal capital of the state of Victoria with a population of around 5 million. It has consistently ranked within top ten of the Global Livability Index and has held the number one place as the most livable city in the world for seven years in a row. Recognized as the city of arts and culture, Melbourne is one of the most popular destinations when it comes to studying abroad. Melbourne's stable, cohesive, and safe society, as well as its multicultural, dynamic and cutting-edge culture truly make the city a magnificent place to study, work, and live. Visit Study Melbourne (www.studymelbourne.vic.gov.au) to learn more about studying in this wonderful city.

Getting Around:

Melbourne's public transport system is easy to navigate and safe. You will be able to travel to most places you need by train, bus, and tram. There are also many places where you can hire bicycles, cars, or even scooters. For more information, visit City of Melbourne's website at www.melbourne.vic.gov.au. For public transport needs, please visit Public Transport Victoria at www.ptv.vic.gov.au and download their app to your phone.

Studying & Working:

For international students, there are certain restrictions and rules when it comes to working in Australia, as well as working while studying. Your visa will have related information and applicable conditions in terms of working in Australia. For more information and to keep up to date, please visit the Australian Government Department of Home Affairs (immi.homeaffairs.gov.au).

Accommodations:

Moving to a new city can be an exciting and stressful process, and one of the most important decisions you'll make is to decide where you want to live. There are several options available for International students, such as student dormitory, homestay, apartment renting, and so on. Everybody's preference is different, and we're here to help!



HOW TO APPLY

International Students

STEP 1

Complete the application form available on our website.



STEP 2

Prepare the following documents and attach them to the application form:

- A scanned copy of your passport
- A copy of your English test result, if you have one
- A copy of your current Australian visa, if you have one
- A copy of your offer letter to an Australian institution, if you have one

STEP 3

If your application is successful, you will receive an offer letter from us. Please sign and return it to us at admissions@focus.edu.au. Make payment as instructed by the Letter of Offer, and send us the receipt once the payment is made.

STEP 4

If your course requires, you will receive a CoE and student insurance confirmation from us.

STEP 5

Apply for an appropriate visa.

STEP 6

Attend our orientation program and commence your studies.

Domestic Students

STEP 1

Complete the application form available on our website.



STEP 2

Prepare the following documents and attach them to the application form:

- A scanned copy of your passport
- A copy of your English test result, if you have one
- A copy of your current Australian visa, if you have one
- A copy of your offer letter to an Australian institution, if you have one

STEP 3

If your application is successful, you will receive an offer letter from us. Please sign and return it to us at admissions@focus.edu.au. Make payment as instructed by the Letter of Offer, and send us the receipt once the payment is made.

STEP 4

Attend our orientation program and commence your studies.



FOCUS

Language School

CONTACT US

Visit us at **FOCUS.EDU.AU**

General Enquiries: hello@focus.edu.au

Location: Level 5, 21 Victoria Street, Melbourne, Victoria, Australia 3000

Telephone: +61 3 9099 0850

Collaborations & Partnerships: bdm@focus.edu.au



STUDY
AUSTRALIA